



**If you have enjoyed using this program,
you might also like to look at my other software...**



**To find out more about any of these programs - contact SpanSoft direct or try out
a shareware copy from your local shareware disk vendor or BBS.
All ASP sources will have the latest version of each program available.**

Kith and Kin

Kith and Kin is a software package for documenting and storing family trees which has been specially designed for the MS-Windows operating system. It features an easy to use graphical interface and powerful multi-level editing tools which makes it ideal for both large and small trees.

The program supports date and place of births, marriages and deaths as well as multiple marriages and aliases for each person. Pictures, diagrams, sounds, etc may be embedded in or linked to a person or family.

A printed book can be produced with family group details (which may incorporate pictures and diagrams) and a complete, cross-referenced index to names and families. You have control over the formatting and extent of all printed reports which also include person details, tree layout, descendant and ancestral trees.

Compatibility with "Personal Ancestral File" GEDCOM files means you can export and import data to and from other genealogy programs. You can also use this feature to prepare extracts from tree files.

The information which you enter into Kith and Kin is organised into families. The main screen is a window into a tree area which displays each family as a rectangle. Relationships between families are shown by parent lines. Using the mouse, you can drag and position the family rectangles within the tree area to form a standard tree layout. You can print out an image of the entire tree area to help you arrange the families in the best positions, using the Tree Layout print.

Once the tree has been built up, the family rectangles can be used for direct access to data by double-clicking the left mouse button on the required family. You can then traverse the tree by selecting people and families from within the family and person data. This makes it very easy to follow a particular route through the tree whilst examining, updating or even adding data.

Download CompuServe / BBS / Internet filename: [KITKIN.ZIP](#)

[Features](#)

[Screen shots](#)

[What the users say](#)

Kith and Kin - Features

Graphical representation of family units and relationships provides fast access to editing.

Multi-level editing means the user can traverse the tree while editing and adding people and families.

Support for date and place of births, deaths and marriages.

Multiple aliases are allowed for each person.

Notes for each person and family may be entered, edited and are included in printed reports. Full clipboard support allows exchange of text with other applications.

Pictures, diagrams, sounds, videos and any object created by other applications which support OLE may be associated with a person or family.

Search for text in any field, including notes, then edit person or family details direct from the search results.

Each person and family has a code which allows fast access to editing as well as making the printed documents readable.

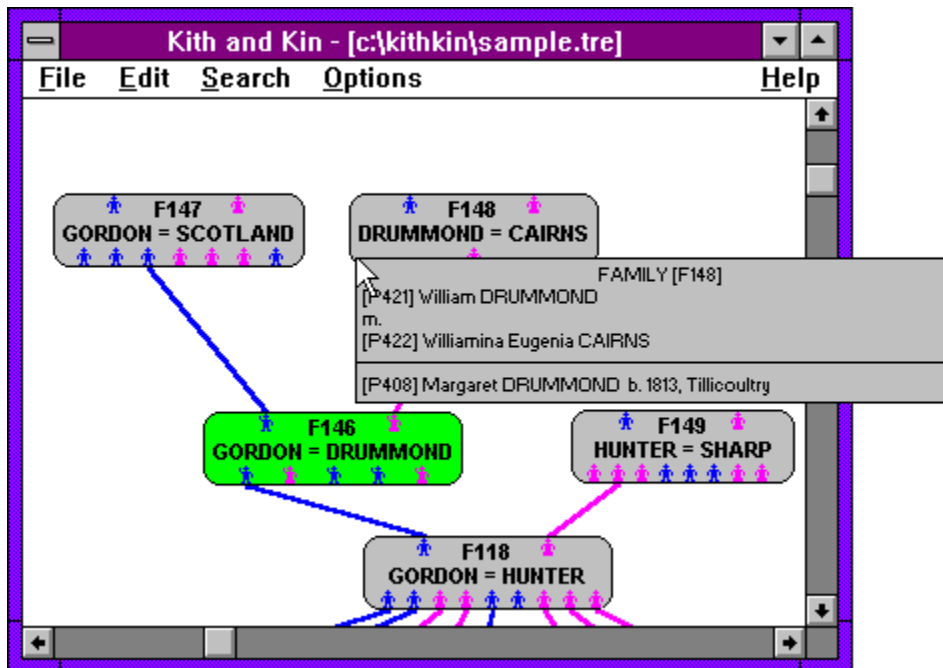
Printouts include tree layout, descendant tree, ancestral tree, family details, person details and index. The format and extent of printed documents may be fully controlled by the user.

PAF GEDCOM files may be imported and exported. Export all or part of a tree and create a new tree or merge trees when importing.

Supports TrueType fonts and colour printing.

Extensive on-line, context sensitive help.

Kith and Kin - Screen shots



This screenshot shows two panels from the software. The top panel is titled 'FAMILY - [F147] ([P413] Thomas GORDON) = ([P414] Isabel SCOTLAND)'. It includes a toolbar with navigation icons and fields for 'Father' ([P413] Thomas GORDON b. 20 May 17) and 'Mother' ([P414] Isabel SCOTLAND). Below these are fields for 'Marriage Date' and 'Place'. The bottom panel is titled 'OBJECTS - [F147] ([P413] Thomas GORDON) = ([P414] Isabel SCOTLAND)'. It features a toolbar with editing icons and an 'Objects:' list:

- Locations in Kinross-shire c. 1807-1841 (with a map icon)
- Music played at wedding (with a musical instrument icon)

Buttons for 'Insert' and 'Delete' are visible on the right side of the objects panel.

Kith and Kin - What the users say

"Kith and Kin is a robust and simple to use genealogy program for Windows 3.1. This is a good program if you are the least bit interested in researching the genealogical history of your family. It is easy enough for the beginner and casual data collector, yet has enough bells and whistles to set it apart from other programs and make your work seem like the fun it should be."

- **Windows On-Line Review (Shareware Edition)**

"... this is definitely the program I'd use. It's very well programmed and presented, user-friendly and generally a treat to use." - **PC Mart**

"Overall I remain very impressed by this package. It is the first genealogy package for Windows which I have tried which I feel provides something extra by using the Windows interface and facilities." - **Family Tree Computer Magazine**

"A very much better quality product than others in the area." - **DF, Co. Down**

"This is certainly the best Windows based program of its type that I have yet found."
- **JS, Kent**

"This is the first shareware that I've actually stumped up for and I do so gladly." - **NB, Dyfed**

"An excellent product - congratulations." - **GMG, Preston**

TreeDraw

TreeDraw is a specialist graphics editor for creating high quality genealogical drop-line charts.

Descendant and ancestral trees may be imported direct from Kith and Kin tree files or from PAF GEDCOM files created by other genealogy programs. TreeDraw converts these trees into easily edited picture elements which can then be re-formatted and re-arranged before storing and printing.

It is now easy to produce perfectly laid out charts and incorporate pictures, diagrams and other simple graphics. The charts may be as complex or as simple as you wish.

By importing a combination of descendant and ancestral trees from one or more tree files, it is possible to build complex charts which can extend in any direction.

TreeDraw maintains a link between each chart text element and the source field in the original tree file. This means that you can update each text element automatically to mirror any changes in the original file. The tree link for each text element can also be modified manually. This is a powerful feature which gives you control over the content and format of the text in the chart.

Additional text elements may be entered manually to provide titles, headings, comments, etc.

As well as text, you can place into the chart simple graphics (lines, boxes, circles) and OLE objects like pictures, clip-art, diagrams, etc.

TreeDraw lets you control the size, shape, style, colour and alignment of all chart elements and supports colour printing.

Download CompuServe / BBS / Internet filename: TREDRW.ZIP

[Features](#)

[Screen shots](#)

TreeDraw - Features

Import descendant and ancestral charts from one or more Kith and Kin or GEDCOM files.

Update the chart text elements automatically to match any changes in the source file.

Add extra text, notes, titles, etc.

Paste pictures and clip-art via Windows OLE.

Add simple graphics, lines, boxes, etc.

Supports colour printing.

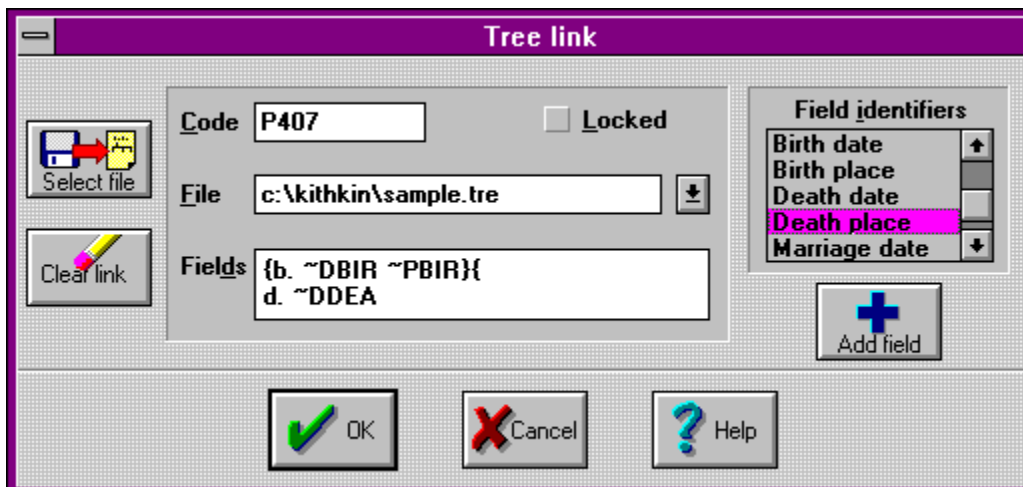
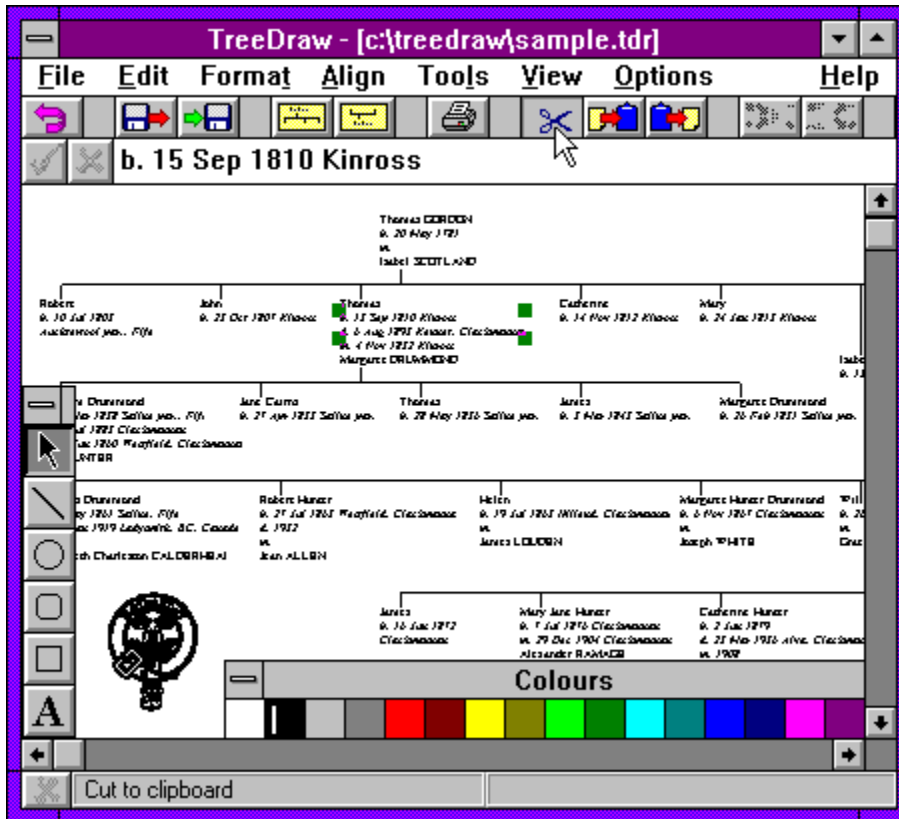
Full control over fonts, colour, size, shape and alignment of picture elements.

Control the format and content of imported trees.

Full, on-line, context-sensitive manual.

Easy to use. Get your charts the way you want them... in minutes!

TreeDraw - Screen shots



SpanSoft

Nick J Hunter
SpanSoft
11 Morlich Park
Dalgety Bay
DUNFERMLINE
Fife KY11 5XW
Scotland

Telephone: National: (01383) 824380
International: +44 1383 824380
(voice or fax)
(0900 - 1700 GMT/BST Monday - Friday)

E-Mail: Internet: nick.hunter@almac.co.uk
FidoNet: NICK HUNTER (2:259/17)
CompuServe: 100101,1155

SpanSoft is a member of the Association of Shareware Professionals.

